

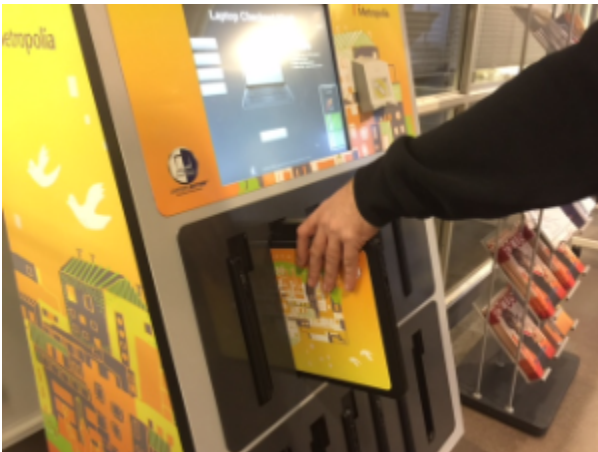
# Laptop lending machine

Metropolia campuses in Bulevardi, Myyrmäki, Leppävaara and Tukholmankatu have received laptop lending machines for their lobbies, from which students can loan a laptop for studying. The lending kioskes are a test to see how we can support learning in modern ways.



Use of the machine is simple:

- Student arrives to the lending machine, and authenticates himself either with his student credentials or with an RFID card and his password
- The lending machine releases a laptop to the student, and the student moves on to carry on his studies in the Metropolia campus area
- After usage, the student returns the laptop to the lending machine, which identifies the laptop and accepts the return. At the same time the lending machine starts to recharge the laptop.



During the testing period, the laptop lending time has been set at four (4) hours. This gives more users the chance to try out the laptops during every day. The lending machine will not give out machines with a too low battery capacity.

The laptops are basic laptops from Dell. When you log on to the laptop, it automatically connects to Metropolia's virtual desktop environment. This makes the laptops need less administrative operations, and the usage of the student environments doesn't need much power from the laptop. You can't install your own software on the laptops, they will be reset every time after usage.

[Frequently Asked Questions](#)

[Terms of Service](#)

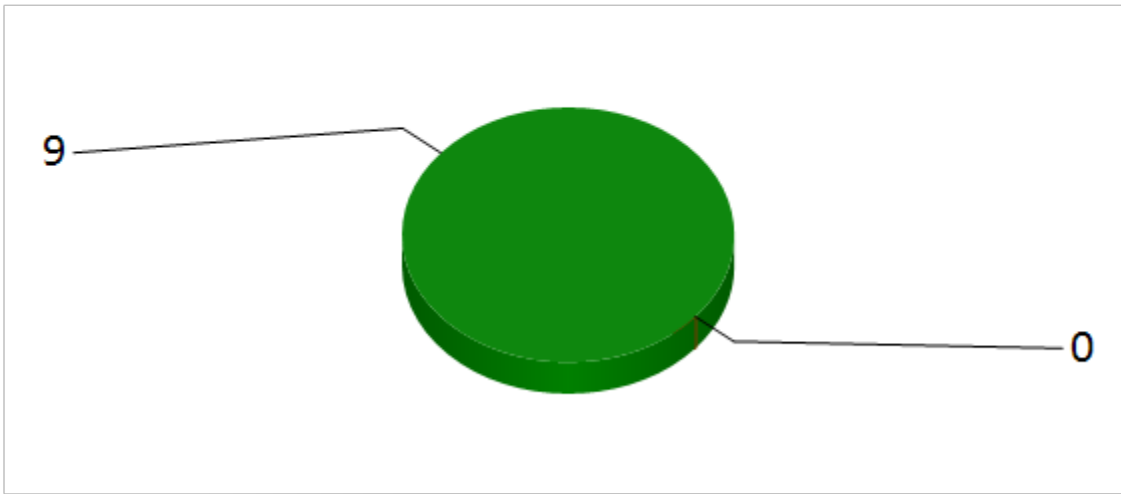
[Technical info](#)

[Leppävaara Usage statistics](#)

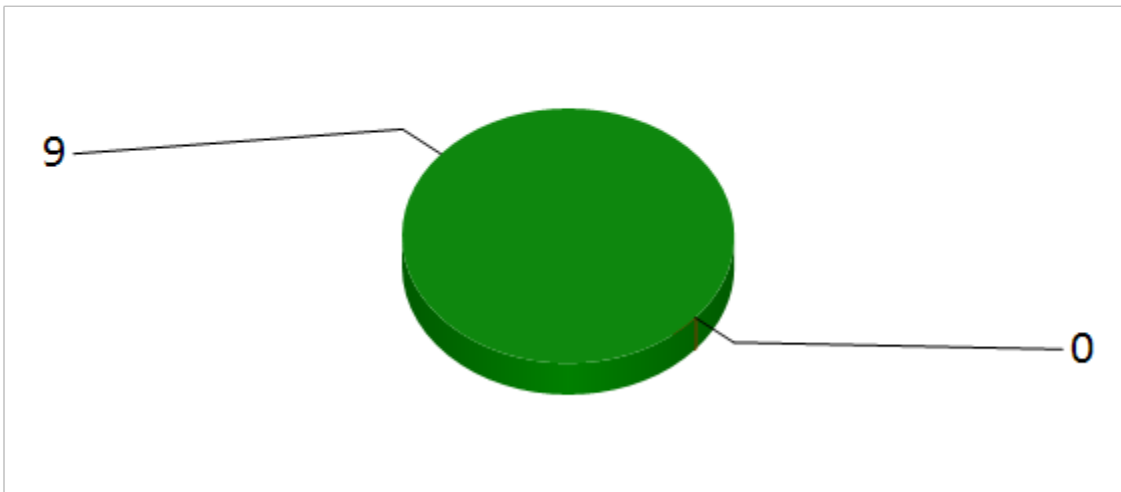
[Tukholmankatu Usage statistics](#)

## Realtime stats:

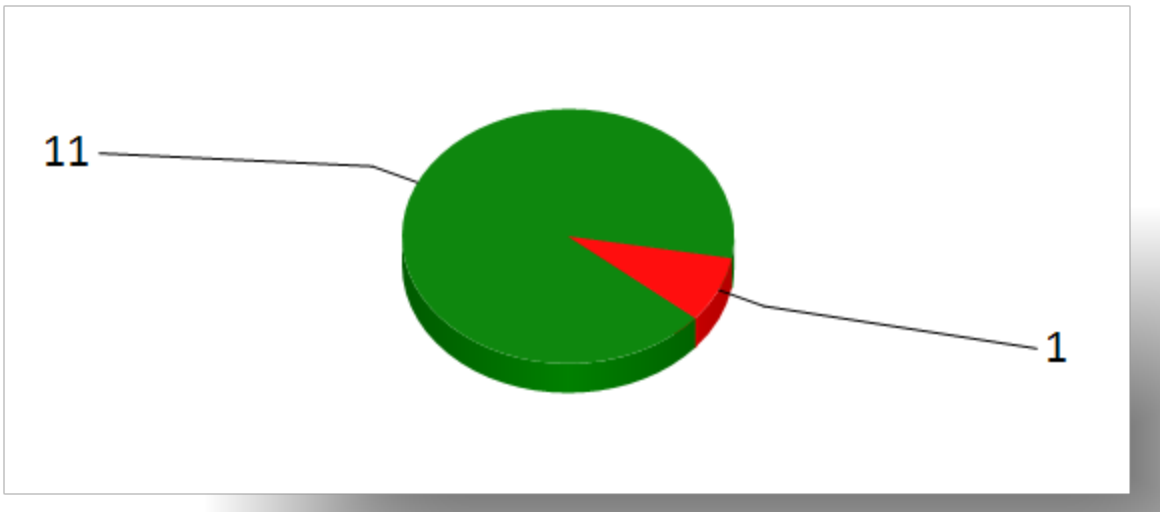
**Tila / Location: ETY-AULA**  
**Päiv. / Upd.: 16.11.2018 09:20**



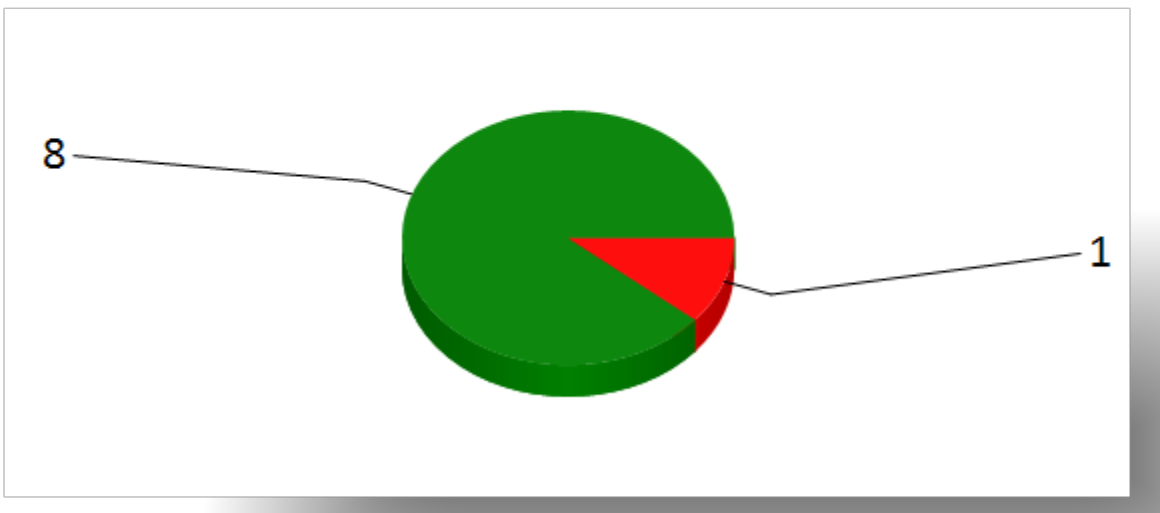
**Tila / Location: T-AULA**  
**Päiv. / Upd.: 16.11.2018 09:19**



**Tila / Location: VTY-AULA**  
**Päiv. / Upd.: 16.10.2018 18:56**



**Tila / Location: P-AULA**  
**Päiv. / Upd.: 16.11.2018 09:20**



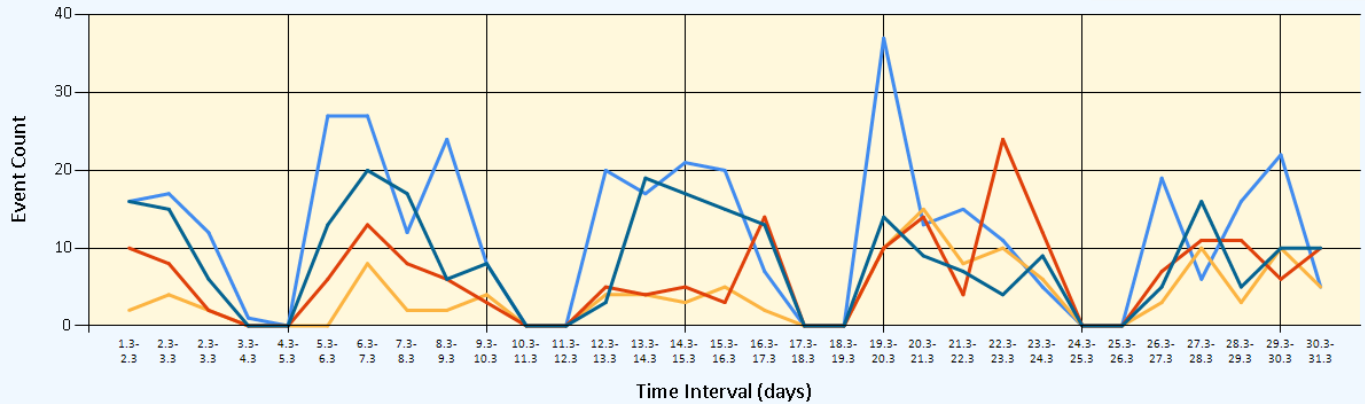
Previous months lending:

28.04.2017 17:24:30

## Metropolia laptop borrowing machine

Daily logon event count during month  
(1.3-1.4.2017)

ROOM =ETY-AULA  
total "logon" events = 378;  
ROOM =P-AULA  
total "logon" events = 122;  
ROOM =T-AULA  
total "logon" events = 196;  
ROOM =VTY-AULA  
total "logon" events = 257;



**Two thesis about LaptopLender (in Finnish)**

**In Google (in Finnish)**

You can find more information about the available student environments from the following link:

Virtual Machines with Vmware View

Surface design by

Johanna Aalto

Lending machine delivered by

<http://laptopsanytime.com/>

Additional Information: IT-support manager Mikko Mäkelä / IT Services